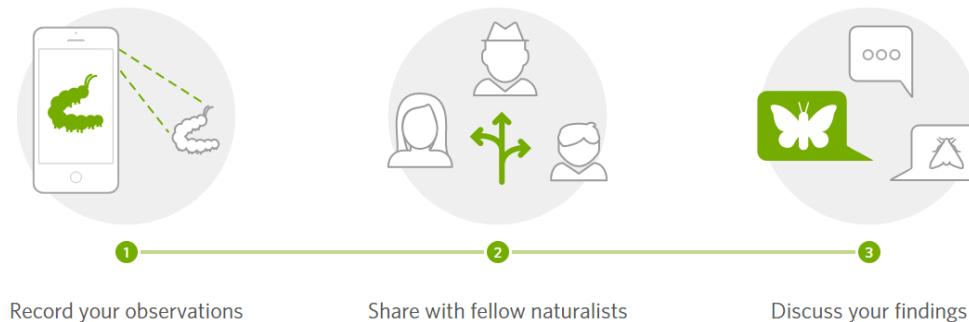


How to Use iNaturalist

Introduction to iNaturalist

[iNaturalist](#) is a free platform—both a website and app—to record observations of plants and animals in nature using photographs; share what you’ve found; and contribute to a global dataset of biodiversity information used for both science and conservation. Making observations is as simple as exploring, being curious, and taking photos of organisms (or evidence of those organisms, like tracks, nests, shells, or skulls.) The iNaturalist computer vision will suggest possible identifications, and then when you upload those observations, the iNaturalist community works together to refine and confirm the identifications. iNaturalist helps anyone explore their surroundings, improves their observation skills, and connects them to a community that will help make them a better naturalist.

How It Works



Getting Started

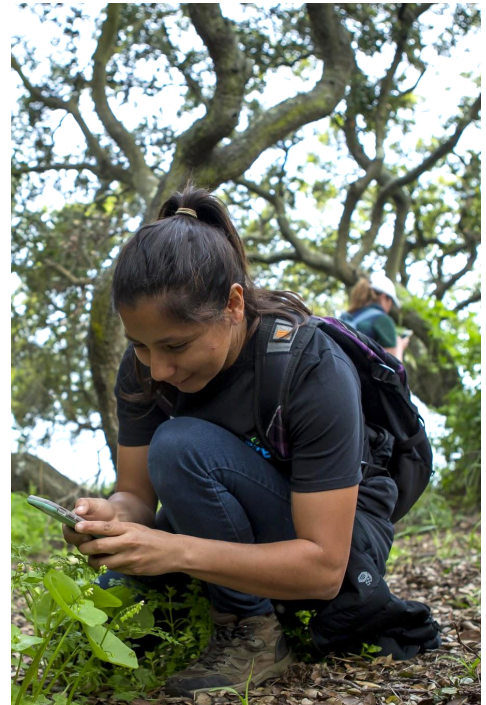
It is free and easy to join iNaturalist. Set up your account on the [iNaturalist website](#) or download the app from the [Apple](#) or [Google Play](#) store and create your login there. Pick a username and password you’ll remember! Once you have an account, you can use it online or on your device, and multiple people can share a login.

Making Observations

To familiarize yourself with iNaturalist, you’re going to want to make some observations. This will give you experience using the iNaturalist app, a feel for what organisms are easiest to photograph, and an understanding of what happens to observations after you upload them.

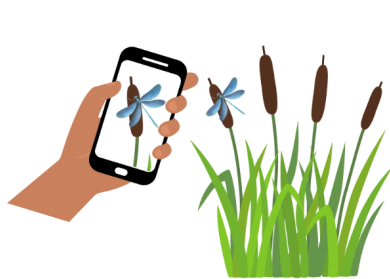
1. Make sure your phone’s location services are turned **on** for your camera and for iNaturalist— usually accessed through the security settings on your phone.
2. Head outside, open up the iNaturalist app and find an organism you’d like to make an observation of. Plants are a good place to start since they won’t run away from you! While you can make observations of anything, try to look for organisms that are wild—so plants growing on their own without human help, or non-domesticated animals, like insects or birds.
3. Tap the button to make a new observation, and choose “Take Photo” when the options pop up.

4. Take your first photo. After you take the photo, you'll have the option of retaking it if you'd like (if it's blurry, for example), or moving on.
5. Once you have a photo you like, you'll be taken back to the observation screen. Notice that iNaturalist will have automatically populated the date and time, as well as your current location.
6. From the observation screen, you can add more photos to the observation, for example, if you'd like to get a close-up of the flower or plant, or the leaves.
7. Once you're satisfied with your photos, tap the box that says "What did you see? View suggestions." If you have a network or wi-fi connection, this will link you to the computer vision on iNaturalist, which will try to suggest possible identifications based on your photograph and your location.
8. The "Top Suggestions" should say that the species are "Visually Similar/Seen Nearby" – these are good choices to pick from. You can pick a suggestion from iNaturalist, or you can type in your own identification using the search bar, at any level of detail you know (e.g., "California poppy" or "Plants" are both fine to use as an ID!)
9. Once you've added an identification, you'll be taken back to the observation screen, where you should save the observation. Once you save it, it will be uploaded to iNaturalist, where the community will work to confirm or refine the identification.
10. Now you're ready to make a new observation!

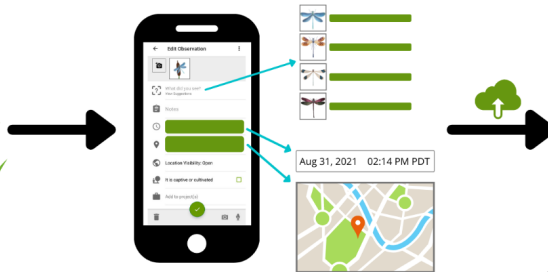


How does iNaturalist work?

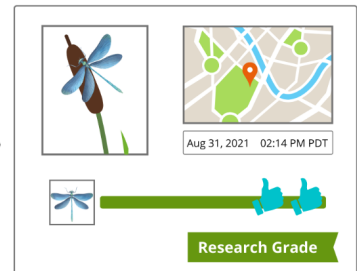
The simplest way to use iNaturalist is to make observations using the app:



Take a photo (or record a sound) of an organism using the app



Computer vision provides suggestions for identification, or you can add your own identification
The app automatically records the date/time and location of the observation



The uploaded observation is visible to the iNaturalist community, who can confirm, correct, and refine identifications
Observations with over 2/3 consensus on the identification are deemed "Research Grade" and shared with other databases

For more detailed instructions about using the iNaturalist iOS and Android apps, as well as for uploading observations via the iNaturalist website, see the iNaturalist [Getting Started](#) guide.